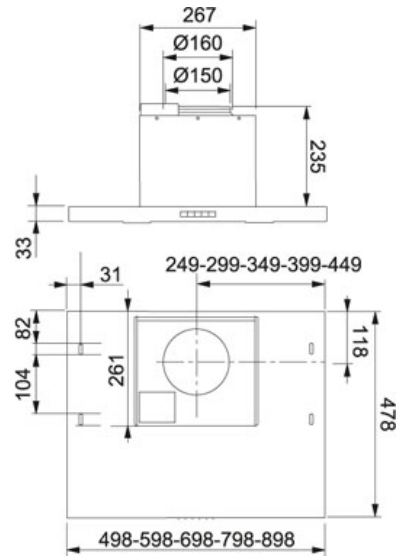


# SPECIFICATION SHEET

PRODUCT FAMILY: Hoods FINISH: Stainless Steel SERIES: F600 MODEL: F600 60CM



## Product Information

Article number	110.0350.545
Old article number	60019001
Energy Efficiency Class Hoods	C
Hood Type Sweden	Spisfläkt
Hood Type	Integrated built-in
Width Hood in cm	60
Capacity DIN IEC 61591 Int.	600 m3/h
Capacity DIN IEC 61591 Max.	360-M3/H
Capacity DIN IEC 61591 Min.	120 m3/h
Noiselevel DIN EN 60704-3 Int.	72 dB(A)
Noiselevel DIN EN 60704-3 Max.	61 dB(A)
Noiselevel DIN EN 60704-3 Min.	34 dB(A)
Power (W)	205 W
Grease filter_1	Stainless steel cassette
Illumination	LEDS 2x2W
Type of Controls	Electronic touch control
Outlet tube diameter_1	Ø 125/150/160 mm
Recommended positioning height above hob	500mm Electric - 650mm Gas
Height Overall	530 mm
Dimensions	650 mmx310 mm

## Characteristics



Easy Clean



Energy Efficiency Class Hood C



4 Speed + Intensive